



DSI Columns®

FIBERGLASS
Beautiful. Durable. Structural

MADE
IN THE
USA 



Since 1984, Digger Specialties, Inc. (DSI) has manufactured the highest of quality of building materials.

At DSI, we are constantly improving and innovating to bring better products to the marketplace, including our Fiberglass Column line.

From our ready-to-finish seamless column to our cost-effective pultruded column, to our Snug-Fit capital and base set - we have a column that will fit your architectural design and project budget needs.

All of our DSI Fiberglass Column products feature our heavy duty packaging to resist transit and jobsite breakage and are backed by a long lasting, peace of mind warranty.

The Fiberglass Column offering is made to stand alone or complement our other top brands including Westbury® Aluminum Railing, PolyRail® Vinyl Railing, DSI Aluminum Columns, and Magena Star® lighting. Check out all our Digger Specialties brands at diggerspecialties.com.



DSI Fiberglass Columns offer quality craftsmanship, impeccable design, and integrated architectural elements to deliver an elegant and low-maintenance, long-lasting column. Our Fiberglass Columns are available in a broad selection of sizes, styles, and load-bearing capacities to meet most project applications.

TABLE OF CONTENTS

Square Columns 2-5

Round Columns 6-9

Craftsman Columns10-11

Pultruded Columns 12-13

Split-Fit® Columns 14

Pilaster Cuts and Bracket Kits 15

Column Packaging 16



SQUARE COLUMNS



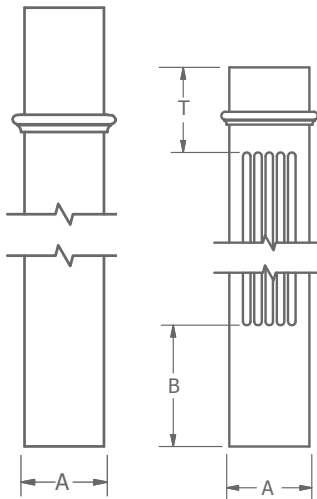
The DSI Square Column line eliminates hours of labor associated with site-built columns while adding crisp, clean lines and architectural aesthetics.

Square Columns are available in smooth, fluted, raised panel, recessed panel, and our unique, recessed panel pedestal design.

SQUARE SMOOTH COLUMNS

Available in Full Columns, Split-Fit® Columns and Pilaster Columns

Column Size	Outside Dimension (A)	Inside Dimension	Material Thickness
6" x 8'	5 3/4"	4 3/4"	1/2"
6" x 9'	5 3/4"	4 3/4"	1/2"
8" x 8'	7 15/16"	6 7/16"	1/2"
8" x 9'	7 15/16"	6 7/16"	1/2"
8" x 10'	7 15/16"	6 7/16"	1/2"
10" x 8'	9 3/4"	8 11/16"	1/2"
10" x 9'	9 3/4"	8 11/16"	1/2"
10" x 10'	9 3/4"	8 11/16"	1/2"
12" x 8'	11 3/4"	10 3/4"	1/2"
12" x 9'	11 3/4"	10 3/4"	1/2"
12" x 10'	11 3/4"	10 3/4"	1/2"
12" x 12'	11 3/4"	10 3/4"	1/2"
14" x 8'	13 7/8"	13 1/8"	3/8"
14" x 9'	13 7/8"	13 1/8"	3/8"
14" x 10'	13 7/8"	13 1/8"	3/8"
14" x 12'	13 7/8"	13 1/8"	3/8"



A Top Outside Dimension
B Design from Bottom
T Design from Top

Astragal Height to be Determined by Customer

SQUARE FLUTED COLUMNS

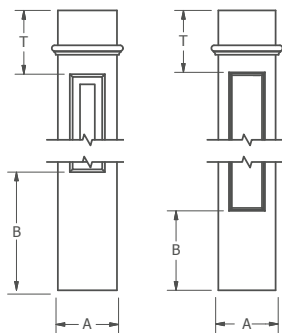
Available in Full Columns, Split-Fit® Columns and Pilaster Columns

Column Size	Outside Dimension (A)	Inside Dimension Top	Inside Dimension Bottom	Material Thickness	Design from Top (T) and from Bottom(B)
8" x 8'	8"	6 3/4"	7 1/4"	3/8"	T = 8 1/2", B = 12 1/8"
8" x 9'	8"	6 3/4"	7 1/4"	3/8"	T = 8 1/2", B = 9 3/8"
8" x 10'	8"	6 3/4"	7 1/4"	3/8"	T = 8 1/2", B = 21 3/8"
10" x 8'	9 7/8"	8 5/8"	9 1/8"	3/8"	T = 9", B = 15 3/4"
10" x 9'	9 7/8"	8 5/8"	9 1/8"	3/8"	T = 9 1/4", B = 6 3/8"
10" x 10'	9 7/8"	8 5/8"	9 1/8"	3/8"	T = 9 1/4", B = 18 3/8"
12" x 9'	11 3/4"	10 1/2"	11"	3/8"	T = 10", B = 9"
12" x 10'	11 3/4"	10 1/2"	11"	3/8"	T = 10", B = 21"
12" x 12'	11 3/4"	10 1/2"	11"	3/8"	T = 10", B = 45 1/2"

Column, Capital, Astragal and Base all in one box

LOAD BEARING (Visit dsicolumns.com for more information)

SQUARE COLUMNS



A Outside Dimension
B Design from Bottom
T Design from Top

Astragal Height to be
Determined by Customer

SQUARE RAISED PANEL COLUMNS

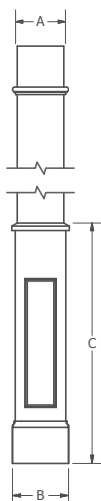
Available in Full Columns, Split-Fit® Columns and Pilaster Columns

Column Size	Outside Dimension (A)	Inside Dimension Top	Inside Dimension Bottom	Material Thickness	Design from Top (T) and from Bottom (B)
8" x 8'	8"	6 3/4"	7 1/4"	3/8"	T = 8 5/8", B = 16"
8" x 9'	7 7/8"	6 3/4"	7 1/4"	3/8"	T = 8 3/8", B = 8 1/2"
8" x 10'	7 7/8"	6 3/4"	7 1/4"	3/8"	T = 8 3/8", B = 20 1/2"
10" x 8'	9 7/8"	8 5/8"	9 1/8"	3/8"	T = 10", B = 16 3/4"
10" x 9'	9 3/4"	8 5/8"	9 1/8"	3/8"	T = 9 7/8", B = 8 3/4"
10" x 10'	9 3/4"	8 5/8"	9 1/8"	3/8"	T = 9 7/8", B = 20 3/4"
12" x 9'	11 5/8"	10 3/8"	10 7/8"	3/8"	T = 10 1/2", B = 5 1/2"
12" x 10'	11 5/8"	10 3/8"	10 7/8"	3/8"	T = 10 1/2", B = 17 1/2"
12" x 12'	11 5/8"	10 3/8"	10 7/8"	3/8"	T = 10 1/2", B = 41 1/2"

SQUARE RECESSED PANEL COLUMNS

Available in Full Columns, Split-Fit® Columns and Pilaster Columns

Column Size	Outside Dimension (A)	Inside Dimension Top	Inside Dimension Bottom	Material Thickness	Design from Top (T) and from Bottom (B)
8" x 8'	7 3/4"	6 3/4"	7 1/4"	3/8"	T = 8 3/8", B = 10 3/4"
8" x 9'	7 3/4"	6 3/4"	7 1/4"	3/8"	T = 8 3/8", B = 9 3/4"
8" x 10'	7 3/4"	6 3/4"	7 1/4"	3/8"	T = 8 3/8", B = 21 3/4"
10" x 8'	9 3/4"	8 5/8"	9 1/8"	3/8"	T = 10", B = 16 1/8"
10" x 9'	9 3/4"	8 5/8"	9 1/8"	3/8"	T = 10", B = 9 3/4"
10" x 10'	9 3/4"	8 5/8"	9 1/8"	3/8"	T = 10", B = 21 3/4"
12" x 8'	11 3/4"	10 3/8"	11"	3/8"	T = 10 1/2", B = 16"
12" x 9'	11 3/4"	10 3/8"	11"	3/8"	T = 10 1/2", B = 28"
12" x 10'	11 3/4"	10 3/8"	11"	3/8"	T = 10 1/2", B = 17 1/2"



SQUARE RECESSED PANEL PEDESTAL COLUMNS

Available in Full Columns, Split-Fit® Columns and Pilaster Columns

Column Size	Outside Dimension Top (A)	Outside Dimension Bottom (B)	Pedestal Height (C)
10" x 8'	8"	10"	41"
10" x 9'	8"	10"	41"
10" x 10'	8"	10"	41"

A Outside Dimension Top
B Outside Dimension Bottom
C Pedestal Height

Astragal Height to be Determined by Customer

- Column, Capital, Astragal and Base all in one box
- Column, Capital and Astragal all in one box

SQUARE CAPITALS & BASES

Capitals and Bases provide a finishing touch to your DSI Fiberglass Column. The standard Capital and Base set for DSI Square Fiberglass Columns is Tuscan-style. The Capital is made from Polyurethane. Unlike other column manufacturers, DSI offers a composite base made from the same material as the column to protect both the base and column from dents and other damage. We also offer an Alto-style composite base for your project needs.



SQUARE POLYURETHANE TUSCAN CAPITALS*

Capital Size	Width	Height	Inside Dimension	Diagonal
6"	8 3/8"	2 1/2"	5 7/8"	11 3/4"
8"	11 1/4"	2 3/4"	8"	15 7/8"
10"	13 5/8"	3 3/8"	9 7/8"	19 1/4"
12"	15 5/8"	3 1/2"	11 7/8"	22"
14"	18 1/4"	4"	14 1/16"	25 7/8"

Snug-Fit Capital Utilizing a patented process, DSI's Snug-Fit Capitals are made for our most popular sizes. The Tuscan-style Capital is Polyurethane with a foam ring for a snug fit. No need to go out and purchase backer rod to close the gap that can sometimes occur between the column shaft and the Capital. The Snug-Fit Capital requires no pilot holes.



SQUARE TUSCAN BASES*

Base Size	Width	Height	Inside Dimension	Diagonal
6"	8 1/8"	3 7/8"	5 7/8"	11 1/2"
8"	10 1/2"	4 1/4"	8 1/8"	14 7/8"
10"	13"	5 1/8"	10"	18 3/8"
12"	14 7/8"	5 5/8"	11 7/8"	21"
14"	17 5/8"	5 5/8"	14 1/16"	24 7/8"



SQUARE ALTO BASES

Base Size	Width	Height	Inside Dimension	Diagonal
6"	7 3/8"	5 3/4"	5 7/8"	10 3/8"
8"	9 3/4"	7 1/8"	8 1/8"	13 3/4"
10"	11 1/2"	8 1/2"	10"	16 1/4"
12"	13 1/2"	9 3/4"	11 7/8"	19 1/8"



*Tuscan Capital and Tuscan Base are included with each Square Column.

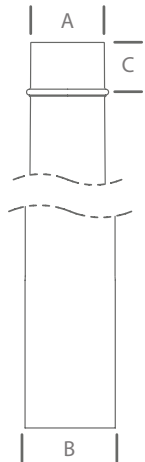


ROUND COLUMNS



Tuscan and Doric columns are the most recognizable architectural elements in the world. From the historical cities of Europe to the cities and towns of the United States, these columns and their elegant styles are celebrated by architects the world over.

DSI Fiberglass Round Columns are available in tapered, fluted tapered, and non-tapered.



- A** Top Outside Diameter
- B** Bottom Outside Diameter
- C** Neck Ring Height

ROUND SMOOTH TAPERED

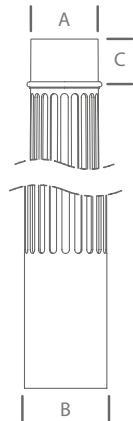
Available in Full Columns, Split-Fit® Columns, and Pilaster Columns

Column Size	Outside Diameter Top (A)	Inside Diameter Top	Outside Diameter Bottom (B)	Inside Diameter Bottom	Taper from Bottom	Material Thickness	Neck Ring Height (C)
6" x 8'	5 1/8"	4 3/8"	6"	5 1/4"	45"	3/8"	4"
8" x 5'	6 1/8"	5 3/8"	7 5/8"	6 7/8"	15"	3/8"	5"
8" x 6'	6 1/8"	5 3/8"	7 5/8"	6 7/8"	27"	3/8"	5"
8" x 8'*	6 1/8"	5 3/8"	7 5/8"	6 7/8"	31"	3/8"	5"
8" x 9'*	6 1/8"	5 3/8"	7 5/8"	6 7/8"	26"	3/8"	5"
8" x 10'*	6 1/8"	5 3/8"	7 5/8"	6 7/8"	38"	3/8"	5"
10" x 6'*	8"	7 1/4"	9 5/8"	8 7/8"	6"	3/8"	5 7/8"
10" x 8'*	8"	7 1/4"	9 5/8"	8 7/8"	30"	3/8"	5 7/8"
10" x 9'*	8"	7 1/4"	9 5/8"	8 7/8"	24"	3/8"	5 7/8"
10" x 10'*	8"	7 1/4"	9 5/8"	8 7/8"	36"	3/8"	5 7/8"
10" x 12'	8"	7 1/4"	9 5/8"	8 7/8"	62"	3/8"	5 7/8"
12" x 6'*	9 3/8"	8 5/8"	11 1/2"	10 3/4"	8"	3/8"	7 3/4"
12" x 8'*	9 3/8"	8 5/8"	11 1/2"	10 3/4"	32"	3/8"	7 3/4"
12" x 9'*	9 1/2"	8 3/4"	11 1/2"	10 3/4"	29"	3/8"	7 3/4"
12" x 10'*	9 1/2"	8 3/4"	11 1/2"	10 3/4"	41"	3/8"	7 3/4"
12" x 12'	9 5/8"	8 7/8"	11 5/8"	10 7/8"	40"	3/8"	7 3/4"
12" x 14'	9 5/8"	8 7/8"	11 5/8"	10 7/8"	48"	3/8"	7 3/4"
12" x 16'	9 5/8"	8 7/8"	11 5/8"	10 7/8"	72"	3/8"	7 3/4"
14" x 8'	12"	11 1/4"	13 7/8"	13 1/8"	22"	3/8"	8 1/8"
14" x 9'	12"	11 1/4"	13 7/8"	13 1/8"	34"	3/8"	8 1/8"
14" x 10'	12"	11 1/4"	13 7/8"	13 1/8"	46"	3/8"	8 1/8"
14" x 12'	12"	11 1/4"	14"	13 1/4"	26"	3/8"	8 1/8"
14" x 14'	12"	11 1/4"	14"	13 1/4"	50"	3/8"	8 1/8"
14" x 16'	12"	11 1/4"	14"	13 1/4"	74"	3/8"	8 1/8"
14" x 18'	12"	11 1/4"	14"	13 1/4"	98"	3/8"	8 1/8"
16" x 8'	13 3/4"	12 3/4"	15 3/4"	14 3/4"	31"	1/2"	8 1/2"
16" x 9'	13 3/4"	12 3/4"	15 3/4"	14 3/4"	43"	1/2"	8 1/2"
16" x 10'	13 3/4"	12 3/4"	15 3/4"	14 3/4"	55"	1/2"	8 1/2"
16" x 12'	13 3/4"	12 3/4"	15 3/4"	14 3/4"	36"	1/2"	9"
16" x 14'	13 3/4"	12 3/4"	15 3/4"	14 3/4"	60"	1/2"	9"
16" x 16'	13 3/4"	12 3/4"	15 3/4"	14 3/4"	84"	1/2"	9"
16" x 18'	13 3/4"	12 3/4"	15 3/4"	14 3/4"	108"	1/2"	9"
18" x 8'	15 3/8"	14 3/8"	17 1/4"	16 1/4"	12"	1/2"	11 5/8"
18" x 9'	15 3/8"	14 3/8"	17 1/4"	16 1/4"	24"	1/2"	11 5/8"
18" x 10'	15 3/8"	14 3/8"	17 1/4"	16 1/4"	36"	1/2"	11 5/8"
18" x 12'	15 3/8"	14 3/8"	17 1/4"	16 1/4"	60"	1/2"	11 5/8"
18" x 14'	15 1/4"	14 3/8"	17 5/8"	16 3/8"	28"	1/2"	11 1/2"
18" x 16'	15 1/4"	14 1/4"	17 5/8"	16 3/8"	60"	1/2"	11 1/2"
18" x 18'	15 1/4"	14 1/4"	17 5/8"	16 3/8"	84"	1/2"	11 1/2"
18" x 20'	15 1/4"	14 1/4"	17 5/8"	16 3/8"	108"	1/2"	11 1/2"
20" x 12'	16 3/8"	15 3/8"	19 3/4"	18 3/4"	0"	1/2"	10 1/8"
20" x 14'	16 3/8"	15 3/8"	19 3/4"	18 3/4"	17"	1/2"	10 1/8"
20" x 16'	16 3/8"	15 3/8"	19 3/4"	18 3/4"	41"	1/2"	10 1/8"
20" x 18'	16 3/8"	15 3/8"	19 3/4"	18 3/4"	65"	1/2"	10 1/8"
20" x 20'	16 3/8"	15 3/8"	19 3/4"	18 3/4"	89"	1/2"	10 1/8"
20" x 22'	16 3/8"	15 3/8"	19 3/4"	18 3/4"	113"	1/2"	10 1/8"
20" x 24'	16 3/8"	15 3/8"	19 3/4"	18 3/4"	137"	1/2"	10 1/8"
24" x 14'	19 3/4"	18 3/4"	23 3/4"	22 3/4"	10"	1/2"	12 1/8"
24" x 16'	19 3/4"	18 3/4"	23 3/4"	22 3/4"	34"	1/2"	12 1/8"
24" x 18'	19 3/4"	18 3/4"	23 3/4"	22 3/4"	58"	1/2"	12 1/8"
24" x 20'	19 3/4"	18 3/4"	23 3/4"	22 3/4"	82"	1/2"	12 1/8"
24" x 22'	19 3/4"	18 3/4"	23 3/4"	22 3/4"	106"	1/2"	12 1/8"
24" x 24'	19 3/4"	18 3/4"	23 3/4"	22 3/4"	130"	1/2"	12 1/8"

* Seamless column, except for Split-Fit®

■ Column, Capital and Base all in one box

ROUND COLUMNS



A Top Outside Diameter
B Bottom Outside Diameter
C Neck Ring Height

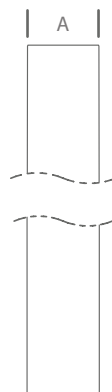
ROUND FLUTED TAPERED

Available in Full Columns, Split-Fit® Columns, and Pilaster Columns

Column Size	Outside Diameter Top (A)	Inside Diameter Top	Outside Diameter Bottom (B)	Inside Diameter Bottom	Taper from Bottom	Material Thickness	Flutes from Bottom	Neck Ring Height (C)
8" x 8'	6 1/4"	5 1/2"	7 3/4"	7"	30"	3/8"	11 1/2"	5 1/4"
8" x 9'	6 1/4"	5 1/4"	7 5/8"	6 7/8"	30"	3/8"	12"	5"
8" x 10'	6 1/4"	5 1/4"	7 5/8"	6 1/4"	42"	3/8"	12"	5"
10" x 8'	8"	7"	9 1/2"	8 5/8"	32"	3/8"	14 1/4"	5 3/4"
10" x 9'	7 1/2"	6 1/4"	9 3/4"	8 3/4"	20"	3/8"	10 1/2"	6 1/4"
10" x 10'	7 1/2"	6 1/4"	9 3/4"	8 3/4"	32"	3/8"	22 1/2"	6 1/4"
12" x 8'	9 5/8"	8 7/8"	11 7/8"	11"	22"	3/8"	15"	7 5/8"
12" x 9'	9 5/8"	8 7/8"	11 7/8"	11"	24"	3/8"	9"	7 5/8"
12" x 10'	9 5/8"	8 7/8"	11 7/8"	11"	36"	3/8"	16"	7 5/8"
12" x 12'	9 1/2"	8 1/2"	11 3/4"	11"	48"	3/8"	22 1/2"	7 5/8"

Our Round Smooth Non-Tapered columns offer a sophisticated uncomplicated look to your project.

To use Decorative Capitals with our Round Smooth Non-Tapered columns, select one size larger capital than the column size. Example: A 10" Non-Tapered Column requires a 12" Roman Ionic Capital.



A Outside Diameter

ROUND SMOOTH NON-TAPERED

Available in Full Columns, Split-Fit® Columns and Pilaster Columns

Column Size	Outside Diameter (A)	Inside Diameter	Material Thickness
8" x 8'	7 5/8"	6 7/8"	3/8"
8" x 9'	7 5/8"	6 7/8"	3/8"
8" x 10'	7 5/8"	6 7/8"	3/8"
10" x 8'	9 5/8"	8 7/8"	3/8"
10" x 9'	9 5/8"	8 7/8"	3/8"
10" x 10'	9 5/8"	8 7/8"	3/8"
10" x 12'	9 5/8"	8 7/8"	3/8"
12" x 8'	11 5/8"	10 7/8"	3/8"
12" x 9'	11 5/8"	10 7/8"	3/8"
12" x 10'	11 5/8"	10 7/8"	3/8"
12" x 12'	11 5/8"	10 7/8"	3/8"
12" x 14'	11 5/8"	10 7/8"	3/8"
12" x 16'	11 5/8"	10 7/8"	3/8"
14" x 8'	13 3/4"	13"	3/8"
14" x 9'	13 3/4"	13"	3/8"
14" x 10'	13 3/4"	13"	3/8"
14" x 12'	13 3/4"	13"	3/8"
14" x 14'	13 3/4"	13"	3/8"
14" x 16'	13 3/4"	13"	3/8"
16" x 8'	15 3/4"	14 3/4"	1/2"
16" x 9'	15 3/4"	14 3/4"	1/2"
18" x 8'	17 5/8"	16 5/8"	1/2"
18" x 9'	17 5/8"	16 5/8"	1/2"
20" x 9'	19 7/8"	18 7/8"	1/2"
20" x 10'	19 7/8"	18 7/8"	1/2"
24" x 9'	23 7/8"	22 5/8"	5/8"
24" x 10'	23 7/8"	22 5/8"	5/8"

Column, Capital and Base all in one box

LOAD BEARING (Visit dsicolumns.com for more information)

ROUND CAPITALS & BASES

NON-TAPERED TUSCAN CAPITALS*



Column Size	Width	Height	Inside Diameter	Diagonal
8"	9 1/8"	2 1/2"	7 11/16"	13"
10"	12 1/4"	3 1/8"	9 7/8"	17 5/16"
12"	14"	3 1/2"	11 3/4"	20"
14"	16 3/4"	3 1/2"	14 1/8"	23 3/4"
16"	19 1/16"	5 1/8"	16 1/4"	27"

ROMAN CORINTHIAN CAPITALS



Column Size	Width	Height	Outside Diameter (Plug)	Diagonal
8"	12 1/4"	8 1/2"	5"	14 5/8"
10"	13 7/8"	11 7/8"	6 3/4"	19 1/4"
12"	18 1/8"	14 3/4"	8 1/4"	23 1/2"
14"	22 1/8"	17 1/2"	10"	28 5/8"
16"	23 1/4"	17 1/4"	12 1/4"	29"
18"	27 1/2"	20 1/4"	12 7/8"	37 1/2"

TAPERED TUSCAN CAPITALS*



■ Snug-Fit Capital (explanation on page 5)

Column Size	Width	Height	Inside Diameter	Diagonal
Polyurethane				
6"	8"	2 1/4"	5 1/4"	11"
8"	9 1/8"	2 1/2"	6 1/4"	13"
10"	12 1/4"	3 1/2"	8 1/8"	17-5/16"
12"	14"	4 1/2"	9 5/8"	20"
14"	16 3/4"	4 1/2"	12 1/8"	23 3/4"
16"	19 1/16"	5 1/8"	14"	27"
Composite				
18"	21 1/4"	5 3/4"	15 3/4"	30"
20"	24 3/8"	5 5/8"	16 3/4"	34 1/2"
24"	27 3/4"	7 5/8"	20 1/2"	39 1/4"

ROMAN IONIC CAPITALS



Column Size	Width	Height	Outside Diameter (Plug)	Diagonal
8"	7 3/4"	3 1/8"	5"	11"
10"	10 1/2"	4 1/4"	6 1/2"	15"
12"	12 3/8"	5"	8 1/4"	17 1/4"
14"	16 3/8"	5 1/2"	9 1/2"	21 1/2"
16"	16 3/8"	6"	12 1/4"	23"
18"	19 1/8"	7 1/2"	13 7/8"	27 1/2"

SCAMOZZI CAPITALS



Column Size	Width	Height	Outside Diameter (Plug)	Diagonal
8"	9 5/8"	3 1/8"	4 7/8"	12 7/8"
10"	13 7/8"	3 3/4"	6 3/8"	18 1/2"
12"	15 1/2"	4 7/8"	7 7/8"	19 7/8"
14"	18 3/8"	5 1/2"	10 1/4"	24 1/4"
16"	20"	6"	12"	26 1/2"
18"	24"	7 1/8"	13 7/8"	31"

TEMPLE OF THE WINDS CAPITALS



Column Size	Width	Height	Outside Diameter (Plug)	Diagonal
8"	10 1/8"	7 3/8"	5"	14 1/8"
10"	13 1/2"	10 1/4"	6 3/4"	19 1/2"
12"	16 1/4"	13"	8 5/8"	23"
14"	20 5/8"	14 1/2"	9 5/8"	29 5/8"
16"	22 5/8"	16"	9 1/2"	31 5/8"
18"	26"	18"	14"	38"

ATTIC BASES



Column Size	Width	Height	Inside Diameter	Diagonal
8"	10 3/8"	4 5/8"	7 3/4"	14 5/8"
10"	13"	5 5/8"	9 7/8"	18 3/8"
12"	15 7/8"	6 3/8"	12"	22 1/2"
14"	19 1/4"	8 3/8"	14 3/8"	27 1/4"
16"	21"	8 3/4"	16"	29 1/2"
18"	24"	10 1/4"	17 3/4"	34"
20"	26 1/2"	10 5/8"	20 1/8"	37 5/8"
24"	32"	13 1/4"	24"	45 1/4"

DORIC BASES*



Column Size	Width	Height	Inside Diameter	Diagonal
6"	8"	3"	6 1/4"	11 1/4"
8"	10"	4 1/8"	7 11/16"	14"
10"	13 1/8"	5 5/8"	9 7/8"	18 15/16"
12"	15 3/8"	6 5/16"	11 3/4"	21 3/4"
14"	18 5/8"	7 1/4"	14 1/8"	26 5/16"
16"	21 1/4"	8 1/8"	16 1/4"	30 1/16"
18"	24"	9 1/4"	18"	33 7/8"
20"	26 1/2"	11"	20 1/8"	37 5/8"
24"	32 1/4"	13 1/2"	24"	45 5/8"

* Tuscan Capital and Doric Base are included with each Round Column except Non-Tapered 18", 20", and 24" Columns which include 2 Doric Bases.



CRAFTSMAN

COLUMNS



The Craftsman architectural style is pure Americana. We offer a complete line of craftsman style columns.

Available in both smooth and recessed panel styles these load-bearing columns will blend seamlessly with your home's craftsman style.

Our Craftsman Columns create a clean, crisp look for your Arts and Crafts project. The columns are load-bearing, and ship complete with 2 pieces of 6' Craftsman Moulding to finish off an aesthetic cap and base look.

And, of course they come with our Limited Lifetime Warranty.

CRAFTSMAN SMOOTH COLUMNS

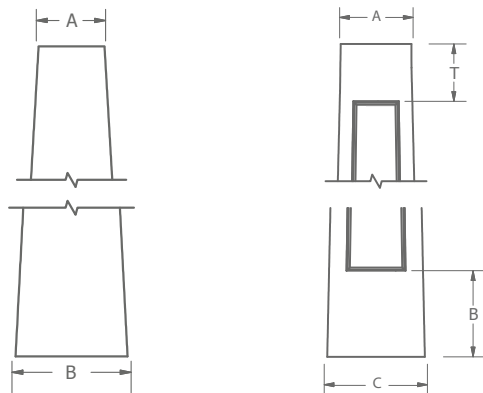
Available in Full Columns, Split-Fit® Columns and Pilaster Columns

Column Size	Outside Dimension Top (A)	Outside Dimension Bottom (B)
8 1/2" x 5 1/4" x 5'	5 1/4"	8 1/2"
9 1/4" x 5 1/4" x 6'	5 1/4"	9 1/4"
11 1/4" x 8 1/2" x 5'	8 1/2"	11 1/4"
12" x 8 1/2" x 6'	8 1/2"	12"
11 7/8" x 9" x 8'	9"	11 7/8"
16" x 9" x 64"	9"	16"
16" x 13" x 60"	13"	16"

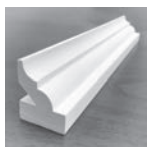
CRAFTSMAN RECESSED COLUMNS

Available in Full Columns, Split-Fit® Columns and Pilaster Columns

Column Size	Outside Dimension Top (A)	Outside Dimension Bottom (C)	Design from Top (T) and from Bottom (B)
8 1/2" x 5 1/4" x 5'	5 1/4"	8 1/2"	T=5 1/2" B=8 1/4"
9 1/4" x 5 1/4" x 6'	5 1/4"	9 1/4"	T=7" B=10 3/4"
11 1/4" x 8 1/2" x 5'	8 1/2"	11 1/4"	T=5 1/2" B=8 1/4"
12" x 8 1/2" x 6'	8 1/2"	12"	T=7" B=10 1/2"
11 7/8" x 9" x 8'	9"	11 7/8"	T=10" B=16 1/2"
16" x 9" x 64"	9"	16"	T=4 3/4" B=11 3/4"

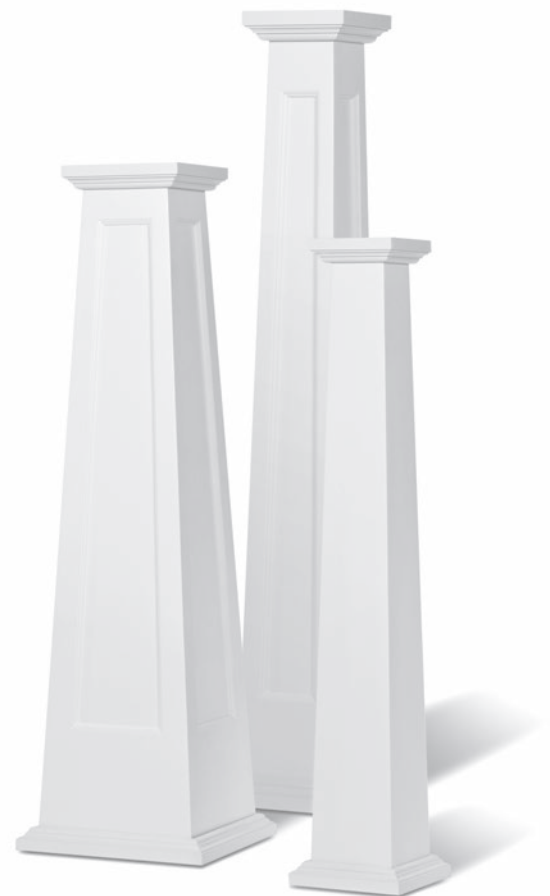


- A** Outside Dimension Top
- B** Outside Dimension Bottom
- T** Design from Top
- B** Design from Bottom
- C** Outside Dimension Bottom



(2) 6' pieces of Craftsman Moulding are included with each Craftsman Column

Width 1 3/8"
Height 2 5/8"



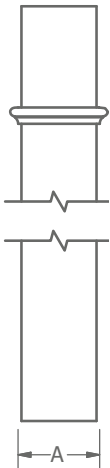
LOAD BEARING (Visit dsicolumns.com for more information)



PULTRUDED COLUMNS



DSI Pultruded Columns offer a lightweight alternative to fiberglass (cast) columns. Our Square Smooth Pultruded Columns are designed with advanced technology to produce load bearing columns. These columns are available in 6", 8", 10", and 12" nominal widths and 8', 9', 10' and 12' lengths.



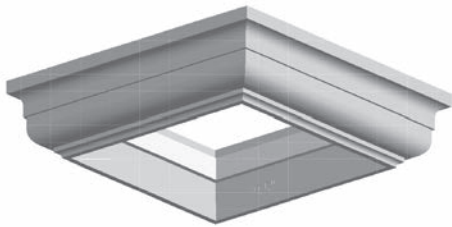
A Outside Dimension
Optional Astragal
Height to be
Determined by
Customer

SQUARE SMOOTH PULTRUDED COLUMNS

Available in Full Columns

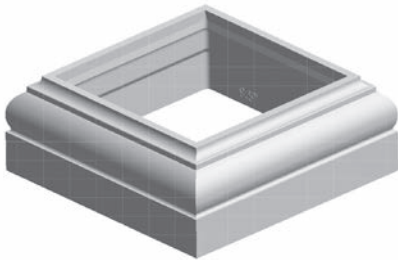
Column Size	Outside Dimension (A)	Inside Dimension	Material Thickness
6" x 8'	5 1/2"	5"	1/8"
6" x 9'	5 1/2"	5"	1/8"
6" x 10'	5 1/2"	5"	1/8"
6" x 12'	5 1/2"	5"	1/8"
8" x 8'	7 1/2"	7"	1/8"
8" x 9'	7 1/2"	7"	1/8"
8" x 10'	7 1/2"	7"	1/8"
8" x 12'	7 1/2"	7"	1/8"
10" x 8'	9 1/2"	9"	1/8"
10" x 9'	9 1/2"	9"	1/8"
10" x 10'	9 1/2"	9"	1/8"
10" x 12'	9 1/2"	9"	1/8"
12" x 8'	11 1/2"	11"	1/8"
12" x 9'	11 1/2"	11"	1/8"
12" x 10'	11 1/2"	11"	1/8"
12" x 12'	11 1/2"	11"	1/8"

Column, Capital, Astragal and Base all in one box



SQUARE PULTRUDED CAPITALS

Capital Size	Width	Height	Inside Dimension	Diagonal
6"	8"	2 1/2"	5 5/8"	11 1/4"
8"	11"	2 13/16"	7 3/4"	15 9/16"
10"	13 1/2"	3 1/2"	9 5/8"	19 1/16"
12"	15 1/2"	3 1/2"	11 11/16"	22"



SQUARE PULTRUDED BASES

Base Size	Width	Height	Inside Dimension	Diagonal
6"	8 1/8"	3 7/8"	5 9/16"	11 1/2"
8"	10"	4 1/4"	7 3/4"	11 1/4"
10"	12 7/8"	4 7/8"	9 5/8"	18 3/16"
12"	14 3/4"	5 5/8"	11 11/16"	21"

Capital, Astragal, and Base are included with each Pultruded Column

LOAD BEARING (Visit [dsicolumns.com](https://www.dsicolumns.com) for more information)

SPLIT-FIT® COLUMNS

Split-Fit® Columns make re-assembling a split column easy. Traditional split columns can be difficult to reassemble on-site and require multiple leveling and alignment adjustments to get the two halves together. DSI's easy indexing keys make aligning the column halves an effortless process, saving you valuable time.

1. The column is split using a precision diamond cut line, and is ready to install
2. The column comes with cast indexing keys installed on the interior of the column for aligning the column halves
 - Tongue and groove fit assures snug installation
 - Three-dimensional alignment guaranteed
 - Restriction of lateral and vertical play – insures easy to finish seam



Optional Split-Fit Assembly Kit Includes:

- One (1) 150 ml EXTREME® Adhesive Cartridge with Adapter
- One (1) Roll of 3M/Scotch Bonding Tape

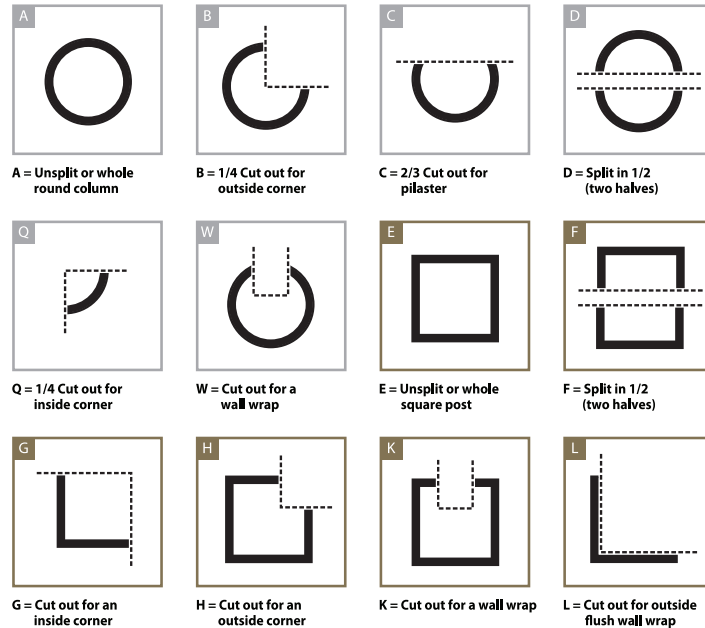


PILASTER CUTS

For those special projects that may need unique and custom ordered cuts DSI has the ability to meet your specifications.

The special cuts chart shows the many cut types available for splitting your column.

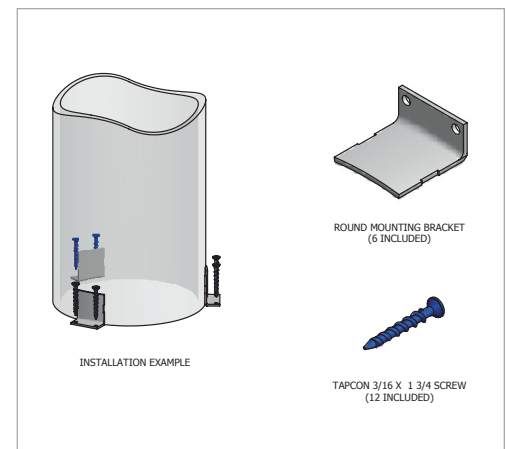
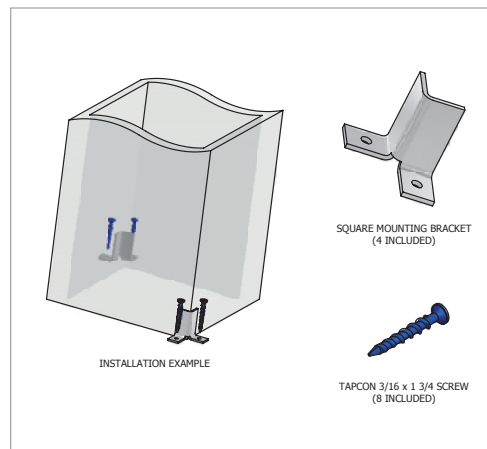
Pilaster Column Cuts are special order and customized to your needs (standard DSI lead times will not apply to these special orders).



ROUND AND SQUARE BRACKET KIT

Our optional bracket kits contain 6 round brackets or 4 square brackets and screws.

The Round and Square Bracket Kits assist in the prevention of column kick-out.



PACKAGING

Nothing increases the cost of a project more than delays. Delays can occur when the column arrives damaged, or the capital and base sets get separated from the order.

DSI takes great care in packaging our Fiberglass Columns. Most sizes are packaged with the complete shaft, capital, and base in one box. The column shaft is “cradled” in the box with foam rings to resist damage.



ALUMINUM COLUMNS

Our DSI Columns® line also includes Aluminum Columns. Available in 5 styles and a variety of sizes and heights; these structural columns are complimented with capitals and bases offering a beautiful finished look. Backed by our Lifetime Limited Warranty these columns will give you peace of mind in your investment.

Our state-of-the-art powder coating facilities ensure that your products receive only the highest grade of powder coating. In fact, DSI is the only aluminum column supplier to receive PCI 4000 Certification from the Powder Coating Institute. All columns are verified AAMA 2604 compliant with available AAMA 2605 upgrade.



DSI FAMILY OF PRODUCTS



dsicolumns.com

We have tried to make this catalog comprehensive and factual. We reserve the right to discontinue at any time, without notice, colors, materials, equipment and availability. Since some information may have been updated since the time of printing, we are not responsible for typographical or pictorial errors. Materials shown may vary slightly from actual colors. ©Digger Specialties 05/18 BR001